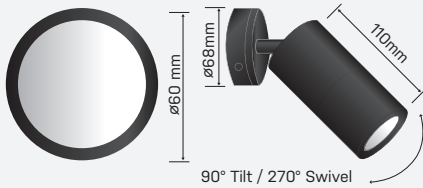


ARCHISPOT Adjustable

ASADJ6W60-B-3K
SAP CODE: 2001818

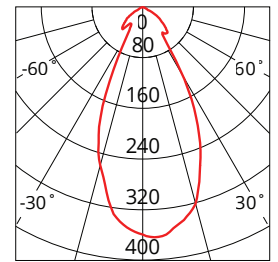


6 Watt adjustable LED pillar style wall light

ARCHISPOT Adjustable is a tubular aluminium wall pillar with a replaceable GU10 LED lamp.



Photometric Diagram



Unit: cd
 - C0/180 48.1 deg
 - C90/270 47.6deg

KEY INFORMATION

Lumen Output	288lm
Input Power	6W
Hole Cutout Size	N/A
Install	SURFACE MOUNT
Dimming Options	Non-Dimmable
Trim Colour	BLACK
Warranty	3yr Fitting 1yr Lamp
IP Rating	IP65

PHOTOMETRIC

Efficacy	48lm/W
LED	SMD
CCT	3000K
CRI	>80
Beam Angle	48°

ELECTRICAL

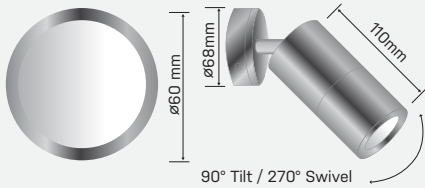
Driver	Integral
Supply Input	220-240V, 50/60Hz
Driver Output Voltage	N/A
Power Factor	>0.9
LED Input Current (nominal)	N/A
Useful life @Ta25° (L70)	30,000hr

CONSTRUCTION

Housing	Aluminium
Optics	Polycarbonate Diffuser
Adjustable Angle	0-90°
Connection Type	Terminal Block
Total Weight	0.40kg
Dimensions	68 x 86 x 175mm
Operating Ambient Temp.	-20 to 40°C
Electrical Classification	Class 1

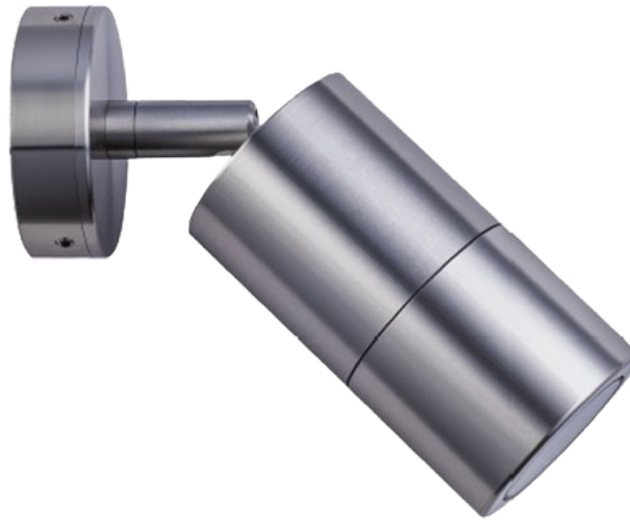
ARCHISPOT Adjustable

ASADJ6W60-S-3K
SAP CODE: 2001478

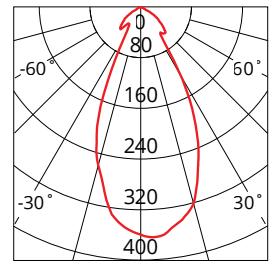


6 Watt adjustable LED pillar style wall light

ARCHISPOT Adjustable is a tubular aluminium wall pillar with a replaceable GU10 LED lamp.



Photometric Diagram



Unit: cd
 - C0/180 48.1deg
 - C90/270 47.6deg

KEY INFORMATION

Lumen Output	288lm
Input Power	6W
Hole Cutout Size	N/A
Install	SURFACE MOUNT
Dimming Options	Non-Dimmable
Trim Colour	BLACK
Warranty	3yr Fitting 1yr Lamp
IP Rating	IP65

PHOTOMETRIC

Efficacy	48lm/W
LED	SMD
CCT	3000K
CRI	>80
Beam Angle	48°

ELECTRICAL

Driver	Integral
Supply Input	220-240V, 50/60Hz
Driver Output Voltage	N/A
Power Factor	>0.9
LED Input Current (nominal)	N/A
Useful life @Ta25° (L70)	30,000hr

CONSTRUCTION

Housing	Aluminium
Optics	Polycarbonate Diffuser
Adjustable Angle	0-90°
Connection Type	Terminal Block
Total Weight	0.40kg
Dimensions	68 x 86 x 175mm
Operating Ambient Temp.	-20 to 40°C
Electrical Classification	Class 1