

RAPTOR LED CEILING FAN

Spec Sheet

Main Features

- 1312mm (52") ceiling fan
- 3-year in home warranty*
- 6-year motor warranty*
- Coastal friendly, corrosion and UV resistant parts for indoor/covered outdoor use
- High performance energy efficient DC motor
- 20W dimmable CCT LED Lamp
- Quick and easy blade installation
- 6-Speed remote controller
 - Fan OFF
 - Light ON/OFF/DIMMING
 - Easy control summer / winter setting



Product Technical Specifications

Colour/Finish option	White, Black	
Blade	ABS (White, Black)	
Rated input voltage	220-240V~	
Rated input frequency	50Hz	
Motor power rating	(DC) 35W	
Lighting	LED	20W Dimmable
	Control Mode	TOTAL LIGHT COLOUR CONTROL Smooth transitional white control mode: Between Warm White to Daylight White AND 4-step colour change mode: Warm White > Neutral White > Cool White > Daylight
	Output	MAX 1200lm
Airflow**	12,000 m3/hr	
Ceiling to Fan Bottom	347mm	
Ceiling to Blade	297mm	
Gross weight	8.72kg	
Net weight	5.06kg	
Packaging	Colour box	
Packaging size (mm)	L708mm x W378mm x H325mm	

Bar Codes

SKU Model	Bar Code
FC978133WH	9312699217265
FC978133BK	9312699217999

Optional Accessories (Sold separately)

MODEL	600mm EXTENSION ROD (FD...)	900mm EXTENSION ROD (FD...)
	+ WIRING LOOMS (XFC...)	+ WIRING LOOMS (XFC...)
FC978133WH	FD360600WH + XFC8283	FD360900WH + XFC8284
FC978133BK	FD360600BK + XFC8283	FD360900BK + XFC8284

*This product must be installed by a licensed electrician

**Accredited testing to U.S. D.O.E. airflow standards. Actual performance may vary.

RAPTOR CEILING FAN

Spec Sheet

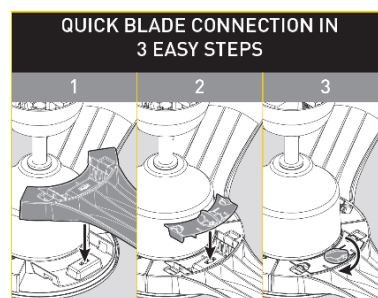
Main Features

- 1312mm (52") ceiling fan
- 3-year in home warranty*
- 6-year motor warranty*
- Coastal friendly, corrosion and UV resistant parts for indoor/covered outdoor use
- High performance energy efficient 35W DC motor
- ABS non-rusting blades and body
- Quick and easy blade installation
- 6-speed remote controller
 - Fan ON/OFF
 - Easy control Summer / Winter reversing setting



Product Technical Specifications

Colour/Finish option	White, Black
Blade	ABS (White, Black)
Rated input voltage	220-240V~
Rated input frequency	50Hz
Motor power rating	(DC) 35W
Airflow**	12,000 m ³ /hr
Ceiling to Fan Bottom	317mm
Ceiling to Blade	297mm
Gross weight	8.16 kg
Net weight	4.50 kg
Packaging	Colour box
Packaging size (mm)	L708mm x W378mm x H325mm



Bar Codes

SKU Model	Bar Code
FC970133WH	9312699217258
FC970133BK	9312699218002

Optional Accessories (Sold separately)

MODEL	600mm EXTENSION ROD (FD...)	900mm EXTENSION ROD (FD...)
	+ WIRING LOOMS (XFC...)	+ WIRING LOOMS (XFC...)
FC970133WH	FD360600WH + XFC8283	FD360900WH + XFC8284
FC970133BK	FD360600BK + XFC8283	FD360900BK + XFC8284

*This product must be installed by a licensed electrician

**Accredited testing to U.S. D.O.E. airflow standards. Actual performance may vary.